

Deep Cries Out

Words and Music by
William Matthews
and Christiann Koepke

♩ = 150

VERSE

G



I've got a riv - er of liv - ing wa - ter, a

5

C



foun - tain that nev - er will _ run dry. _ It's an

9

G

C

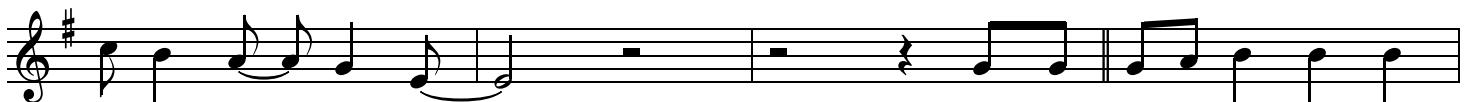


o - pen heav - en You're re - leas - ing, and we will

PRE-CHORUS

G

14



nev - er be _ de - nied. _ 'Cause we're stir-ring up deep deep

18

G/B

C



wells. We're stir-ring up deep deep wa - ters. We're gon-na dance in the

22

G

riv - er, dance in the riv - er. 'Cause we're stir-ring up deep deep

26

G/B

C

wells. We're stir-ring up deep deep wa - ters. We're gon - na jump in the

§ CHORUS

30

G

riv - er, jump in the riv - er. Deep cries out to, deep .
jump in and ev - 'ry - bod - y sing it out.

34

Am⁷

G/B

__ cries out __ to You, deep cries out to, deep __ cries out __ to You; We cry out to, we __

38

C

1. 2. 3. D.S.

__ cry out __ to You, Je - sus. __ We're

BRIDGE 1

43

G

Am⁷

G/B

fall - ing in - to deep - er wa - ters, call - ing

48

C

G

out to You. We're walk - ing in - to

53 Am⁷ G/B C

deep - er wa - ters, go - ing af - ter You.

59 G

INSTRUMENTAL 1

1.

63 G

BRIDGE 2

If He goes to the left, then we'll go to the left. And if He

66 G/B C

goes to the right, then we'll go to the right. We're gon - na jump, jump, jump, jump

69 G

BRIDGE 3 & 4

in the riv - er. Jump, jump, jump, jump ev - 'ry-bod - y. If He goes to the left, then we'll

73 G/B

go to the left. And if He goes to the right, then we'll go to the right. We're gon - na

76 C

1.

dance, dance, dance, dance in the riv - er. Dance, dance, dance, dance shout, shout, shout, shout

INSTRUMENTAL 2

79

Musical staff for measure 79, starting with a treble clef and a key signature of one sharp (F#). The staff contains a melodic line with eighth and quarter notes. A first ending bracket spans from the end of the staff to the beginning of measure 82. A second ending bracket spans from the beginning of measure 82 to the end of the staff.

ev - 'ry - bod - y. If He Shout, shout, shout, shout., — yeah!

83

Musical staff for measure 83, continuing the melodic line. Chord symbols Am⁷, G/B, and C are placed above the staff.

89

Musical staff for measure 89, continuing the melodic line. Chord symbols G and Am⁷ are placed above the staff.

CHORUS

94

Musical staff for measure 94, starting the chorus. Chord symbols G/B, C, and G are placed above the staff. The staff contains a melodic line with quarter and eighth notes.

Deep cries out to, deep .

99

Musical staff for measure 99, continuing the chorus. Chord symbols Am⁷ and G/B are placed above the staff.

— cries out — to You, deep cries out to, deep — cries out — to You; We cry out to, we —

103

Musical staff for measure 103, continuing the chorus. A first ending bracket spans from the end of the staff to the beginning of measure 106. A chord symbol C is placed above the staff.

— cry out — to You, Je - sus. —

106

Musical staff for measure 106, continuing the chorus. A second ending bracket spans from the beginning of the staff to the end. Chord symbols C and G are placed above the staff.

You, Je - sus.