

# Great I Am

Words and Music by  
Jared Anderson

♩=80

## VERSE 1

D

Em<sup>7</sup>

A/C#

D



1. I wan-na be \_ close, \_ close to Your side \_ so Heav-en is real .

4

Em<sup>7</sup>

A/C#

Bm<sup>7</sup>

Em<sup>7</sup>

A/C#



\_ and death is a \_ lie; \_ I wan-na hear voic - es of an - gels a - bove .



## CHORUS

7

D

Em<sup>7</sup>

A/C#

Bm<sup>7</sup>

G



\_ sing-ing as one \_ Hal - le - lu - jah, ho - ly, ho - ly, God Al - migh-

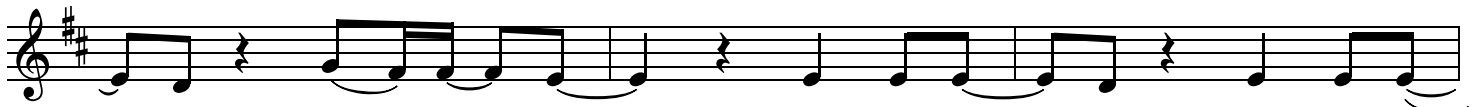
11

D

A<sup>sus</sup>

A

Bm<sup>7</sup>



- y, great \_ I \_ Am; \_ Who is wor - thy, none be - side \_

14

G

D

2nd time to Coda ⊕  
A<sup>sus</sup>



\_ Thee; God Al - migh - y, great \_ I \_ Am. \_

## VERSE 2

17

A

D

Em<sup>7</sup>

A/C#



2. I wan-na be \_ near, \_ near to Your heart, .

20 D Em<sup>7</sup> A/C# Bm<sup>7</sup>

— lov - ing the world, — hat - ing the dark; — I wan - na see dry —

23 Em<sup>7</sup> A/C# D Em<sup>7</sup> A/C# D.S. al Coda

— bones liv - ing a - gain, — sing - ing as — one — Hal - le - lu -

26  $\oplus$  Coda A BRIDGE Bm

The moun - tains shake be - fore You; The de - mons run — and flee

29 G D

at the men - tion of Your name, King of maj - es - ty; There is no pow'r in hell

32 A

or an - y who can stand — be - fore the pow - er and the Pres - ence of the great I — Am, . .

35 Bm G D

— the great I — Am, — the great I — Am; —

38 A Bm G

— The great I — Am, — the great I — Am, — the great I — Am. . .

CHORUS

41 D A Bm<sup>7</sup> G

Hal - le - lu - jah, ho - ly, ho - ly, God Al - might -

45 D A<sup>sus</sup> A Bm<sup>7</sup>

- y, great - I - Am; Who is wor - thy, none be - side -

48 G D

— Thee; God Al - might - y, great - I - Am. —

50 A<sup>sus</sup> A G

—