

# Way Maker

(based on the recording by Leeland)

Words and Music by  
Osinachi Kalu Okoro Egbu

♩ = 68

## VERSE 1

A

E



1. You are here, — mov-ing in — our — midst; I wor - ship You, .

3

B<sup>SUS</sup>

C#m

A



— I wor - ship You. — You are here, — work-ing in — this —

6

E

B<sup>SUS</sup>

1.  
C#m



— place; I wor - ship You, — I wor - ship You. — 1. You are here,

9

2.  
C#m

## CHORUS

A

E



— You are Way Mak-er, Mir - a - cle Work-er, Prom-ise Keep-er, Light in the dark - ness, .

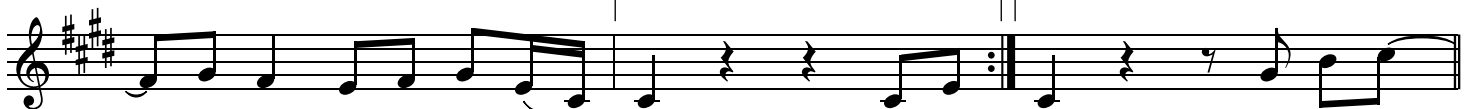
12

B<sup>SUS</sup>

1.  
C#m

2.  
C#m

B



— my God, that is who You — are. You are are. 2. You are here, —  
(3. You are here,) —

## VERSE 2 &amp; 3

15

A

E

B<sup>sus</sup>

— touch - ing ev - 'ry — heart; I wor - ship You, — I wor - ship .  
 — turn - ing lives — a - round; I wor - ship You, — I wor - ship .

18

C#m

A

E



— You. You are here, — heal - ing ev - 'ry — heart; I wor - ship You, .  
 — You. You are here, — mend - ing ev - 'ry — heart; I wor - ship You, .

21

1.  
B<sup>sus</sup>

C#m

2.  
B<sup>sus</sup>

— I wor - ship You. — 3. You are here, — yeah, — I wor - ship .

## § CHORUS

24

C#m

A



— You, Lord. — You — are — Way Mak - er, Mir - a - cle Work - er,

26

E

B<sup>sus</sup>1, 2, 3, 5.  
C#m

Prom - ise Keep - er, Light in the dark - ness, — my God, that is who You — are. You are

29

4, 6.  
C#mTAG 1a  
A

E/G#



are. That is who You — are. That is who You — are. That is who You —

32 **B** 1, 3.  
C#m 2, 4.  
C#m

are. That is who You are. That is who You are.

**CHORUS**

35 **A** **E**

Way Mak - er, Mir - a - cle Work - er, Prom - ise Keep - er, Light in the dark - ness, -

37 **B<sup>sus</sup>** 4th time to Coda 1, 3.  
C#m 2.  
C#m

- my God, that is who You are. You are are.

**BRIDGE**

40 **A** **E**

E - ven when I don't see it, You're work - ing. E - ven when I don't feel it, You're work - ing.

42 **B<sup>sus</sup>** 1, 2, 3.  
C#m

You nev - er stop, You nev - er stop work - ing. You nev - er stop, You nev - er stop work - ing.

44 4.  
C#m D.S. al Coda

You nev - er stop, You nev - er stop work - ing.

**INSTRUMENTAL**

45 Coda C#m A<sup>2</sup> **E** B<sup>(4)</sup>

are.

49

1. C#m7      2. C#m7      TAG 1b  
A<sup>2</sup>

That is who You \_ are.      That is who You \_

52

E/G#      B(4)

are.      That is who You \_ are.      That is who You \_

54

1. C#m7      2. C#m7      A<sup>2</sup>

are.      That is who You \_ are.